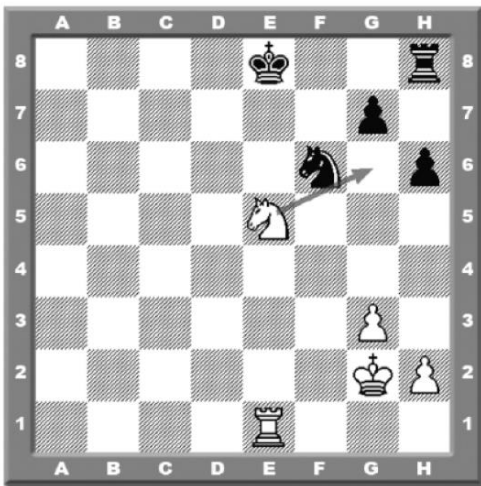


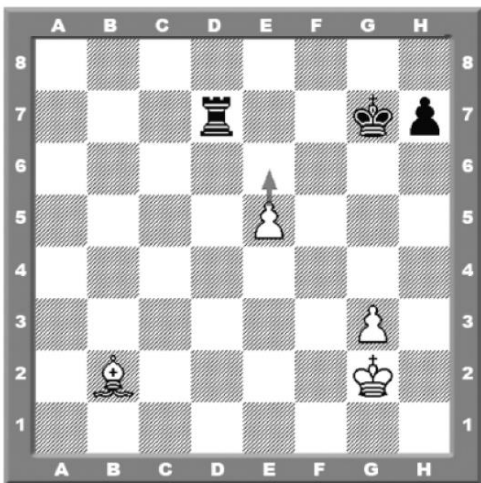
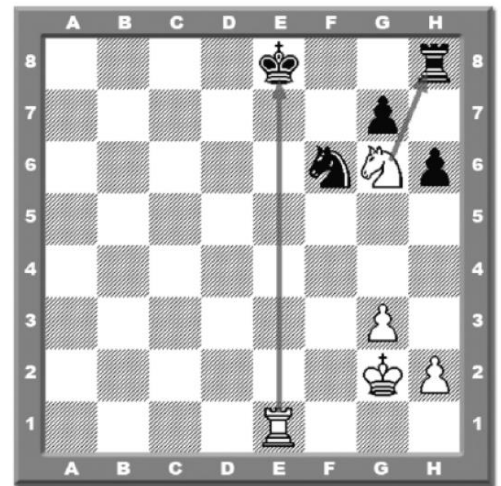


DISCOVERED CHECK

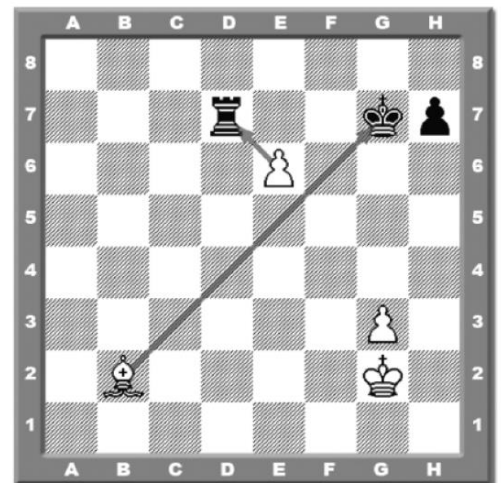
Checking your opponents King can be done by moving a pieces that directly attacks the king, or indirectly, by moving a piece and exposing the line of fire between the attacker and the king, as in the following example:



The white knight moves and clears the line of fire between the white rook and the black king. The white knight himself is also attacking the black rook. The king must escape, and the knight captures the rook. This is what we mean by "discovered check".



Here is another example of a discovered check: The white pawn moves and clears the way for his bishop to check the king. The king must move, and the pawn captures the rook.





In the following drills you have to find the discovered check and capture an enemy piece:

